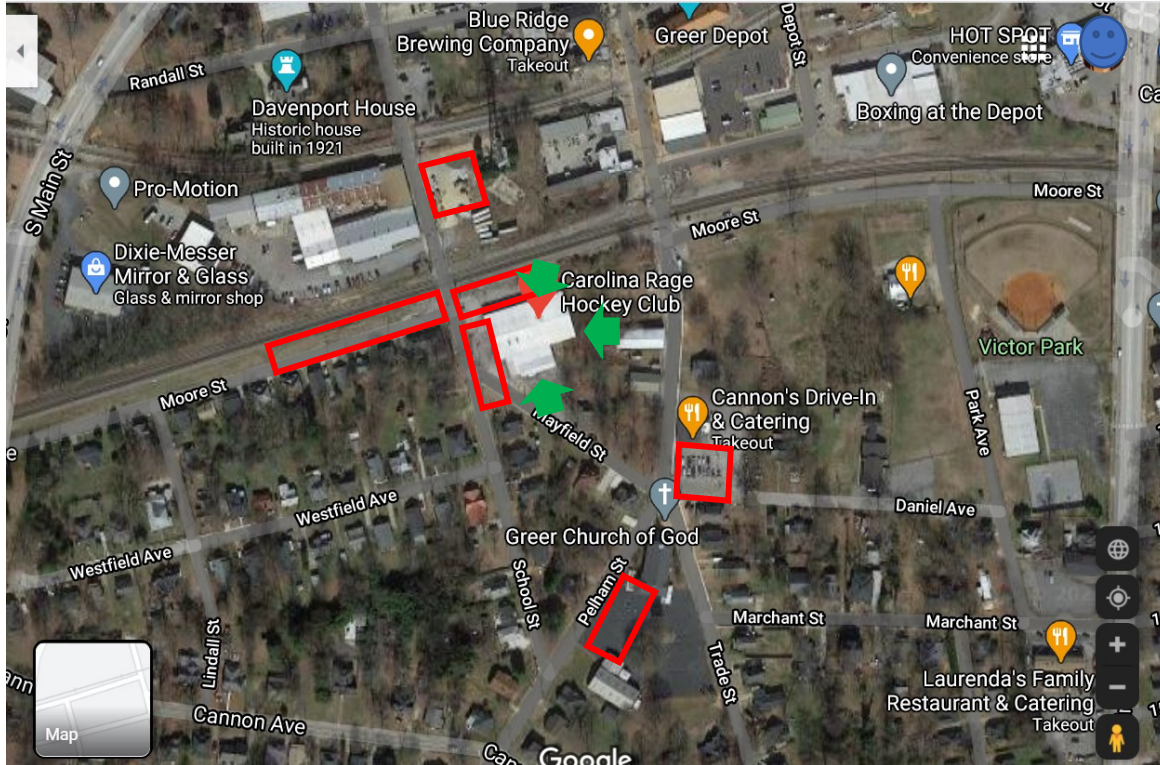




# PARKING AREAS RINK ENTRANCES & EXITS AT THE ICE STATION



***Please note: Parking at the Greer Church of God is only available on Friday and Saturday. Parking behind Cannon's restaurant is available after 5 p.m. Friday and Saturday and all-day Sunday.***

-  Green arrows indicate entrances into rink.
-  Red shapes indicate parking areas around rink.